

The effects of storage on germination characteristics of barley seeds

Tabatabaei, S.A^{1*}, Naghibalghora, S.M²

1. Faculty member, Agricultural and natural resources research center of Yazd, Iran.
2. M.Sc of Agronomy

**Corresponding author email: tabataba4761@yahoo.com*

ABSTRACT: Seed moisture content (MC) and storage temperature are the most important factors affecting seed longevity and vigor. Exposure to warm, moist air is principally responsible for this. Proper storage and optimum seed moisture content can affect the grain quality significantly. The purpose of this study was to evaluate the different storage treatments on seed quality of barley. The seed materials were fresh without any storage period. For storage treatments, 3 seed moisture contents (6, 10, 14%) were stored for 8 month in 0.5 L capacity sealed aluminum foil packet in 0.3 bar inside incubators set at 4 temperatures (5, 15, 25, 35°C). After storage time, the higher the storage temperature, the lower was the grain quality of barley. The highest germination percentage, germination index, normal seedling percentage were achieved in control conditions (0 day of storage). Our results showed that increasing storage duration resulted higher reduction in germination characteristics. Also our results showed that, germination percentage, means time to germination, germination index, normal seedling percentage decrease significantly by storage.

Keywords: Storage, Germination characteristics, Barley.

INTRODUCTION

Seed characteristics decrease under long storage condition due to aging. Changes that occur in seed during aging are significant in terms of seed quality, the feature that, among other things, also implies seed longevity (McDonald, 1999). Progress of the technology and industrialization of agricultural production has increased opportunities for long term storage of seed. Aging conditions generally reduces seed vigor (McDonald, 1999).

The purpose of proper storage is to inhibit biological processes to the highest possible extent and to eliminate unfavorable environmental factors, which limit duration of the safe storage. The biochemical processes occurring in grain are directly influenced by moisture content, air temperature, contact with air and condition of grain (degree of damage) (McDonald, 1999).

Seed deterioration can be defined as the loss of quality, viability and vigour either due to aging or effect of adverse environmental factors. The rate of deterioration rapidly increases in either seed moisture content or temperature of storage (Kapoor et al., 2010). Decrease in seed vigour is due to decrease in seed quality, percentage, rate of germination and yield and also can increase susceptibility to environmental stress (Tekrony et al., 1989). Rising of temperature, humidity and oxygen pressure could cause structural damages on DNA and ribosomal RNA, increasing enzyme activity, respiration and membrane permeability (Mc Donald, 1999).

The purpose of storage is to maintain harvest quality of product, not to improve it (Sisman and Delibas, 2004). The rate at which the seed aging process takes place depends on the ability of seed to resist degradation changes by protection mechanisms which are specific for each plant species. Loss of viability in crops is also attributed to non-congenial storage environmental factors like higher relative humidity and temperature during storage. In this context storage of seeds has been considered as most important as "seed saved is seed produced". The objectives of this study were to determine how different seed storage methods and storage times affected the germination characteristics of barley seeds.

MATERIALS AND METHODS

Moisture content (%)

The moisture content of the seed was calculated as per the International Seed Testing Association (ISTA) Rules (ISTA, 2010) by hot air oven method maintaining $130^{\circ}\text{C} \pm 2^{\circ}\text{C}$ for 2hr. The moisture content was calculated on wet basis and expressed in percentage by using the following formula:

$$(M 2 - M 3) / (M 2 - M 1) \times 100$$

Where,

M 1 = Weight of empty moisture tin (g)

M 2 = Weight of moisture tin and seed material before drying (g)

M 3 = Weight of moisture tin and seed material after drying (g)

Storage conditions

Seeds with 3 moisture contents (6, 10 and 14%) were exposed to 4 temperatures (5, 15, 25 and 35°C) for six months. Seeds were taken every month and measured.

Standard germination test was carried out at 20°C for 7 days in three replications of 50 seeds. Seeds were germinated on two layers of filter papers (Whatman no. 1) moistened with 5 ml distilled water in petri-dishes. The germinated seeds (2 mm radicle elongation) were counted daily to calculate germination rate. At the end of the germination period, total and germination percentage, normal seedling percentage, germination index and mean time to germination were recorded.

RESULTS AND DISCUSSION

The results indicated that duration of storage (A), temperature (B), moisture contents (C), AxB, AxC, BxC and AxBxC interaction were significant ($P < 0.01, 0.05$) for all traits in seeds under storage (Tab 1). Our results showed that the highest germination percentage (Fig 1), normal seedling percentage (Fig 2), germination index (Fig 3) and the minimum, mean time to germination (Fig 4) were achieved under control conditions (0 day of storage). Therefore the minimum these traits were attained under 180 days of aging. Seed germination, normal seedling percentage, germination index reduced with increase in seed moisture content and storage temperature (Fig 1, 2 and 3), but mean time to germination increases by increase in seed moisture content and storage temperature (Fig 4). The highest germination characteristics in barley seed was attained at 6% seed moisture contents at 5, 15 and 25 but reduced at 35°C (Fig 1, 2, 3 and 4). Germination percentage of seeds with 6% moisture content stored at 5°C after 180 days was 72%, while the germination percentage of seeds with 6% moisture content stored at 35°C after 180 days was 44% and Germination percentage of seeds with 14% moisture content stored at 5°C after 180 days was 60% (Fig 1 a), while the germination percentage of seeds with 14% moisture content stored at 35°C after 180 days was 28% (Fig 1 c). The results of our study suggested that increases in storage caused a decrease in germination characteristics (Fig 1).

Increasing seed age decreased germination and this result is in accordance with Jan-Mohammadi et al. (2008) and Ghassemi-Golezani et al. (2010) in rapeseed and Saha and Sultana (2008) in soybean. Also, earlier reports (Bailly, 2004; McDonald, 2004) have shown negative effect of aging in relation to seed performance, germination percentage and seedling indices.

Table 1. Analysis of variance temperature, moisture and storage on traits studied of barley.

S.O.V	df	Germination percentage	Normal seedling percentage	Germination index	Mean time to germination
Duration of storage (A)	5	6017.36**	12072.29**	438.37**	1.8**
Temperature (B)	3	2971.28**	3811.01**	381.45**	0.32**
Moisture contents (C)	2	1221.68**	1213.01**	83.95**	0.66**
AxB	15	143.59**	160.52**	3.95**	0.49**
AxC	10	50.01**	51.46**	2.46*	0.18**
BxC	6	64.01**	63.14**	10.16**	0.64**
AxBxC	30	14.29*	14.38*	2.5**	0.13**
Error	-	7.85	7.94	1.21	0.04
C.V%	-	3.97	4.83	6	6.38

*and ** indicate significant difference at 5% and 1% probability level respectively.

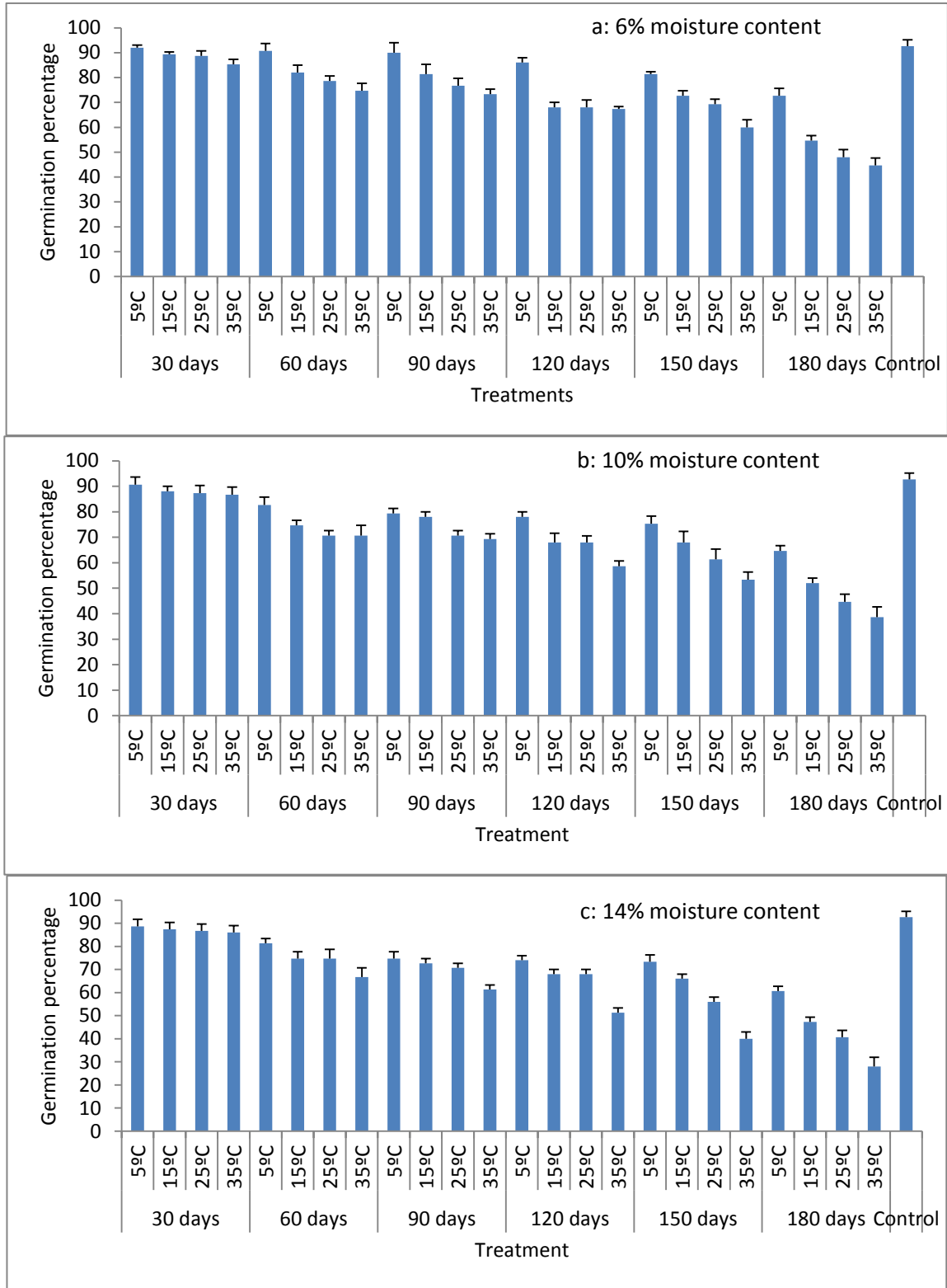


Figure 1. The effect of duration of storage x temperature x moisture contents interaction on germination percentage of barley seeds.

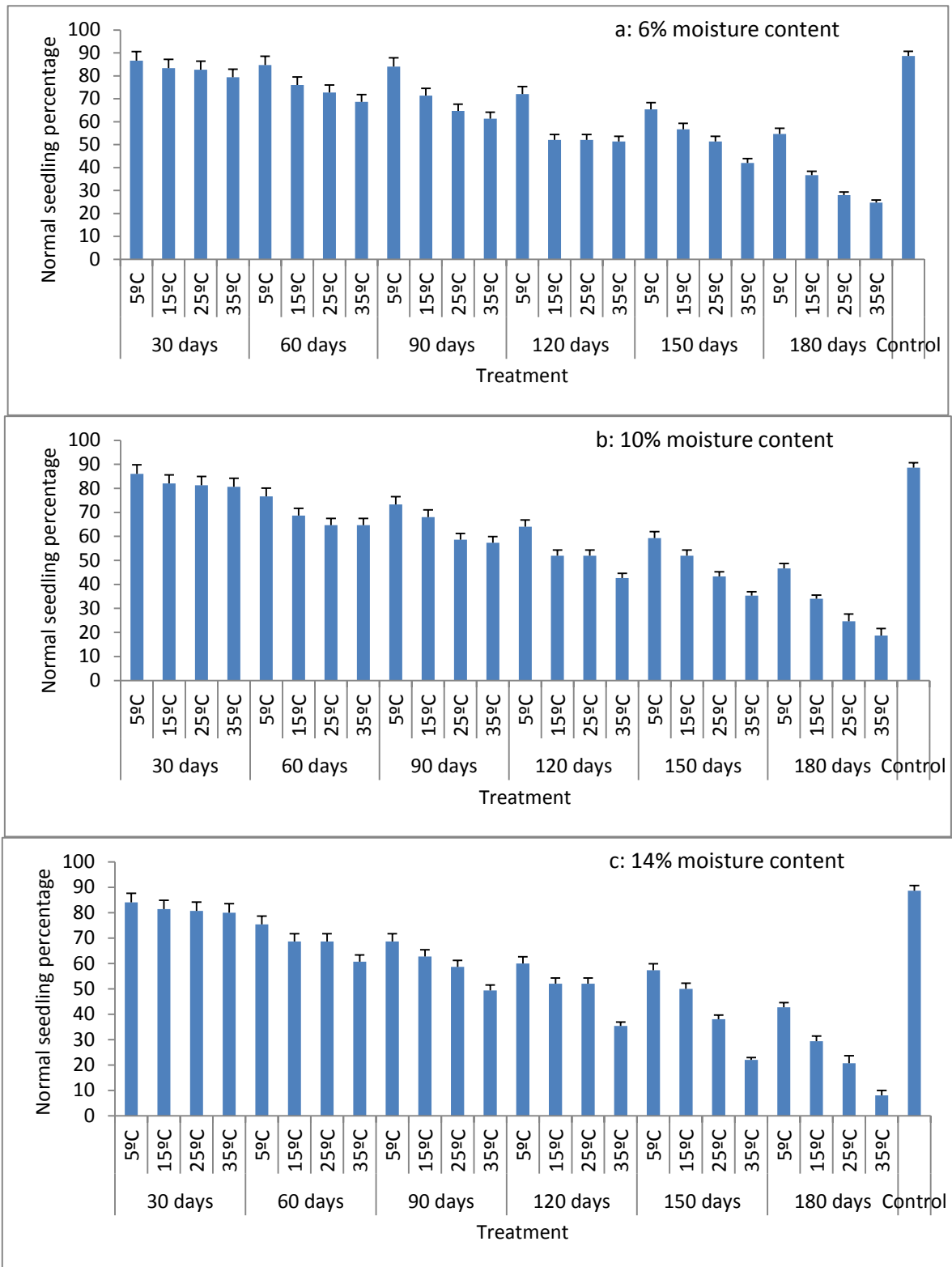


Figure 2. The effect of duration of storage x temperature x moisture contents interaction on normal seedling percentage of barley seeds.

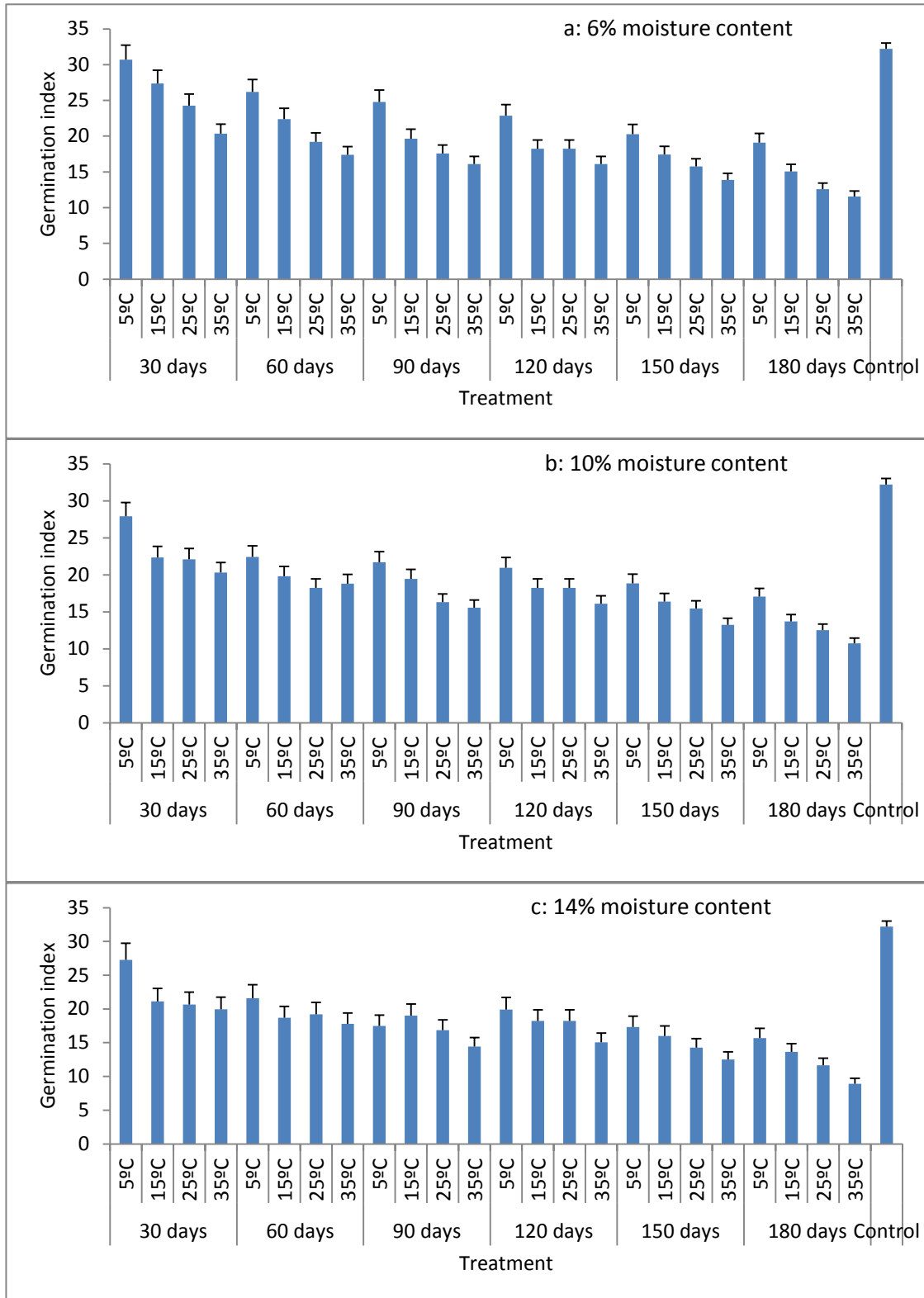


Figure 3. The effect of duration of storage x temperature x moisture contents interaction on germination index of barley seeds.

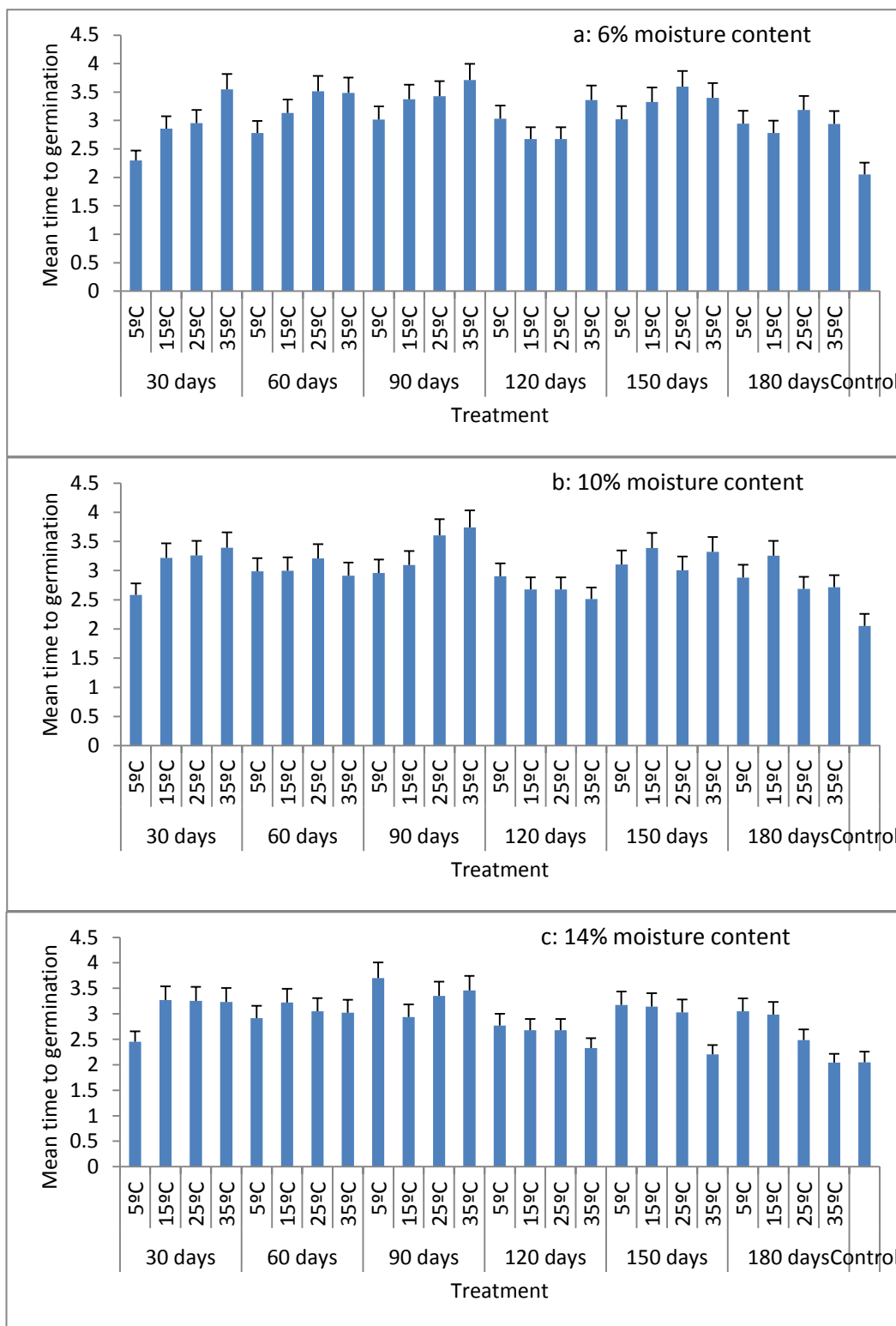


Figure 4. The effect of duration of storage x temperature x moisture contents interaction on normal mean time to germination of barley seeds.

According to Ghasemnezhad and Honermeir (2007), the storage life of sunflower seed can be reduced by long storage and high storage temperature.

Akhtar et al. (1992) suggested that decreasing in GP was related to chromosomal aberrations that occur under long storage conditions. Decreasing of GP in aged seeds can be due to reduction of α -amylase activity and carbohydrate contents (Bailly, 2004) or denaturation of proteins (Nautiyal et al., 1985). According to Abdalla and Roberts, (1968) barley and pea seeds treated with different combinations of accelerated ageing treatment showed that the amount of genetic damage was solely a function of loss of viability.

CONCLUSION

The higher the storage temperature, the lower was the grain quality of barley. The highest germination percentage, germination index, normal seedling percentage were achieved in control conditions (0 day of storage). Our results showed that increasing storage duration resulted higher reduction in germination characteristics.

REFERENCES

- Abdalla FH, Roberts EH. 1968. Effects of temperature, moisture and oxygen on the induction of chromosome damage in seeds of barley, broad beans and peas during storage. *Ann Bot.* 32: 119-136.
- Akhter FN, Kabir G, Mannan MA, Shaheen NN. 1992. Aging effect of wheat and barley seeds upon germination mitotic index and chromosomal damage. *J Islam Acad Sci.* 5:44-48.
- Bailly C. 2004. Active oxygen species and antioxidants in seed biology. *Seed Sci Res.* 14:93-107.
- Ghasemi-Golezani K, Salehian H, Rahimzade-Khoei F, Moghadam M. 1996. The effect of seed vigor on seedling emergence and yield of wheat. *Natural Resources and Agricultural Sciences.* 3: 58-48.
- Ghasemnezhad A, Honermeier B. 2007. Influence of storage conditions on quality and viability of high and low oleic sunflower seeds. *International Journal of Plant Production.* 3(4).
- ISTA. 2010. International Rules for Seed Testing. International Seed Testing Association, Switzerland.
- Jan-Mohammadi M, Fallahnezhad F, Golsha M, Mohammadi H. 2008. Controlled ageing for storability assessment and predicting seedling early growth of canola cultivars (*Brassica napus* L.). *ARPN J Agric Biol Sci.* 3:22-26.
- Kapoor N, Arya A, Siddiqui MA, Amir A., Kumar H. 2010. Seed deterioration in chickpea (*Cicer arietinum* L.) under accelerated aging. *Asian J Plant Sci.* 9(3):158-162.
- McDonald MB. 1999. Seed deterioration: physiology, repair and assessment. *Seed Science Technology.* 27:177-237.
- McDonald MB. 2004. Orthodox seed deterioration and its repair, pp. 273-304. In: *Handbook of Seed Physiology: Applications to Agriculture*, Benech-Arnold, R. L. and R.A. Sanchez (Eds.). Food Products Press, New York.
- Nautiyal AR, Thapliyal AP, Purohit AN. 1985. Seed viability. IV. Protein changes: Accompanying loss of viability in Shorea robusta. *Seed Sci Technol.* 13:83-86.
- Saha RR, Sultana W. 2008. Influence of seed ageing on growth and yield of soybean. *Bangla J Bot.* 37:21-26.
- Sisman C, Delibas L. 2004. Storing sunflower seed and quality losses during storage. *Journal of Central European Agriculture.* 4: 239-250.
- TeKrony DM, Egli DB, Wickham DA. 1989. Corn seed vigour effect on no-tillage field performance. *J Crop Sci.* 29:1523-1528.